



FP-TUOTTEET

FP ROLLER SHUTTER

SOLID BURGLARY PROTECTION
FOR MANY APPLICATIONS

TILANTEKIJÄ.

Teemme tiloistasi toimivia

HIGH-QUALITY BURGLARY PROTECTION

A very sturdy, motor-driven and CE-approved FP Roller Shutter provides good burglary protection, for example, for shopping centres, business premises, catering lines, checkout lines, shopping trolley shelters, automated warehouses, public kitchenettes, loading docks, garages and display windows. The roller shutter is always equipped with automatic locking that prevents the shutter from being opened by hand lifting.

The standard colour of the roller shutter is naturally anodised aluminium, but it is available in all RAL shades and a variety of profile options. The roller shutter can be operated either through a motor or through a motor with an emergency crank handle. The locking options are automatic locking, padlock corner brackets, Abloy hook bolt lock and electric lock on the side rail.

Optionally, the roller shutter can be equipped with a safety edge, impulse control and electrical locks.



FP ROLLER SHUTTER

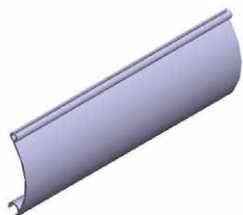
- The product is CE-approved
- FP Roller Shutters meet the functional and safety requirements of standard EN13241-1
- Roller shutters for entrance openings are always equipped with a mechanical safety brake complying with the standard

FP CLASSIFIED ROLLER SHUTTER

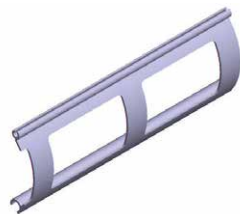
- The product is CE-approved
- The roller shutter is equipped with the accessories required by standard EN1627
- Additional locks as standard (see section Locking)

PROFILE OPTIONS

All our profile options except straight slats belong to the EN 1627 resistance classes. The maximum size available is 8,000 x 6,000 mm (WxH)



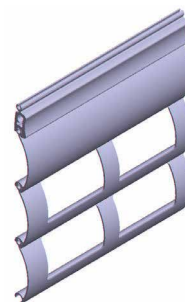
SOLID
Resistance class: 3 EN 1627
Slat weight: 6,6 kg/m²



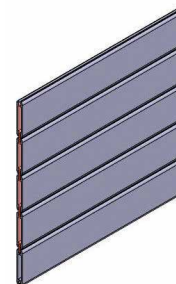
WITH OPENINGS
Resistance class: 1 EN 1627
Slat weight: 4,0 kg/m²
Opening ratio: 57,2 %
Opening size: 70 x 40 mm



PERFORATED
Resistance class: 3 EN 1627
Slat weight: 6,2 kg/m²
Opening ratio: 25,3 %
Opening size: ø 4 mm



WITH OPENINGS AND REINFORCEMENT SLATS
Resistance class: 2 EN 1627
Slat weight: 5,3 kg/m²



STRAIGHT
Resistance class: Not tested
Slat weight: 7,0 kg/m²

EMERGENCY USE

An emergency version of the tubular motor is available as an option. This version of the motor has a loop shaft, which can be rotated during a power failure to operate the motor. A crank handle suitable for the loop is always supplied with the motor.

COLOURS

- The aluminium parts are naturally anodised as standard
- The end brackets are powder-coated in the standard colour
- The slats, side rails and end brackets can be powder-coated in standard RAL shades
- There is an option of having all parts or some parts painted

CASING

- Casing available as an option
- Roller shutters less than 4 m wide include a 1 mm thick trimmed aluminium sheet
- Standard colours RR20 white and RR21 grey
- Roller shutters more than 4 m wide include a 1.5 mm thick trimmed steel sheet painted in the desired RAL shade

OPERATING SWITCHES

- E301 push button switch (flush mounting)
 - E303 push button switch (surface mounting)
 - key switch flush/surface
- The key switch is compatible with the Abloy CL687 lock cylinder. The key switch is equipped with the manufacturer's standard lock cylinder with three keys. If one roller shutter is controlled by more than one key switch, or if one key switch controls more than one roller shutter, a relay must always be used. The key switches or motor must not be coupled in parallel.

LOCKING

The roller shutters are always equipped with tested automatic locking that prevents the closed shutter from being opened manually by lifting the slats. Automatic locking alone provides very good protection against burglars.

FP Classified Roller Shutters are always equipped with additional locks complying with the standard.

STATUS INFORMATION

- Available as an option for roller shutters with curved slats
- Abloy EA501 magnetic contact
- Built-in
- No visible parts or wires

CONTACT US AND ASK FOR MORE INFORMATION:

myynti@fp-tuotteet.fi
+358 10 6339 200